

# FORENSIC EVIDENCE DRYING CABINET

**PROVIDES OPERATOR & EVIDENCE PROTECTION**

Exceeds OSHA, ANSI and all relevant international standards

## FEATURES

- Eliminates odors & chemical fumes using HEPA & Carbon filters
- Dries various items of evidence in a controlled environment
- High protection of personnel from airborne hazards & bacterial pathogens
- Protection of evidence from cross contamination
- Many sizes available
- Easy to install



**Toll Free/ 800.306.0656 F/ 800.306.0677**

**WWW.AIR-SCIENCE.COM**



**AIR SCIENCE USA**



Made in the USA

Air Science USA are leaders in filtration and contamination control equipment and have a range of cabinets designed specifically for forensic applications. Whether you need to protect the operator or the evidence we have a range of cabinets to suit your needs.

## A drying cabinet for the storage of evidence



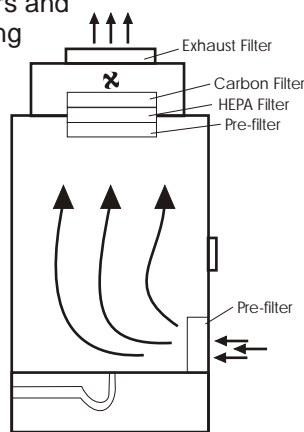
### SAFEKEEPER

Available in 3, 4, 5, & 6 foot widths, including Duplex versions.

### WORKING PRINCIPLES

Air coming into the cabinet is first passed through an in-let pre-filter to ensure it is clean. Vapors, odors and particulates given off while drying are filtered by both special carbon and HEPA filters. These main filters are protected by a filterete pre-filter. An optional safety exhaust filter can also be added to comply with US Lab Ventilation Standard Z9.5.

High quality fans maintain a constant airflow, even when the pre-filters are partly blocked. If the air velocity reduces to the extent that performance is adversely affected, a low airflow alarm is activated.



Air Flow Pattern

### INTRODUCTION

The **Forensic Evidence Cabinet** is a containment cabinet for the drying and storing of forensic evidence. The airflow through the cabinet gives a constant drying medium for items of evidence large or small, and contains any fumes, odors or particulates given off while drying, thus ensuring a safe working environment for personnel.

### FEATURES

- Eliminates putrid odors and chemical fumes using carbon filtration
- Dries various items of evidence in a controlled environment
- High protection of personnel from airborne hazards and bacterial pathogens thru HEPA filtration
- Protection of evidence from cross contamination
- Low airflow alarm detects pre-filter blockage
- Compliance with OSHA/ANSI regulations
- Simple to install
- Easily cleaned to prevent cross contamination
- Lockable with tamper-proof seals for security
- Safety back-up filters available ANSI Z9.5 compliant when fitted

### CONSTRUCTION

Corrosion proof design increases operational life, with the use of reinforced plastics and epoxy coated steel surfaces that are resistant to corrosion from various liquids and fumes.

The cabinet can be easily cleaned down after use by rinsing with a spray hose incorporated in the cabinet and washing with detergent and water. The space inside the cabinet can be used to provide full length hanging space and removable shelves for storage of smaller items.

### EASY TO USE CONTROL PANEL

Complete with alarms which monitor filter condition, airflow and filter lifetime. An hour counter tracks drying time.

## BENCH TOP VERSION . . . .

Our **Bench Top** mounted 'mini-keeper' design is ideal when floor space is limited.



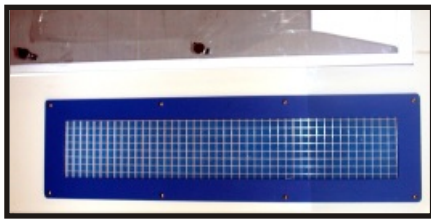
## . . . DUPLEX VERSION

The **Duplex** style units are available in addition to our single large compartment design. Duplex units offer a solid wall between compartments and allows

two cases to share a unit while preventing any chance of cross contamination.

## SAFE AND EASY TO CHANGE FILTERS

Saturated and dirty pre-filters are changed from within the cabinet while unit is running to prevent operator contamination. The patented filter clamping mechanism allows the main filter to slide directly into a bag. A new filter can be installed without a high overhead reach and an even seal at filter face at all times prevents bypass leakage.



## PRE-FILTERS

Air in-take area has a no-metal design and allows filter to be changed without tools. A cover is provided when 'air tight'

secure dry storage is required.

## SHELVES

Each cabinet contains three perforated polypropylene shelves that can easily be removed with one hand without tools.

## HANGING ROD

Each cabinet contains a removable hanging rod for drying items. A start up kit is recommended for the

added convenience of hangers, paper lining, tamper proof seals, etc.



## WASTE PUMP

A waste pump is included for when units cannot be "hard-plumbed."



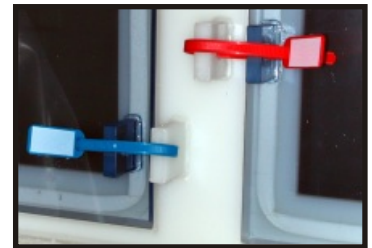
## PLUMBING PACKAGE

Each cabinet includes a complete plumbing package that makes cleaning the cabinet easy. The spray hose is kept inside the working compartment at all times to prevent the chance of contamination leaving the cabinet. A bottom drain with an "anti-siphon" trap to prevent hazardous back flow of gases is also provided.



## TAMPER PROOF SEALS

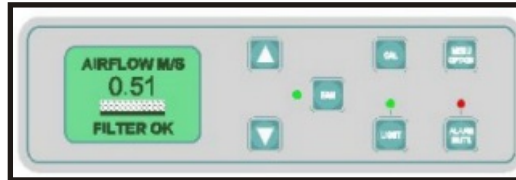
Front door is key locked with additional tamper proof seal housing that will accommodate I.D. tags or a pad lock for extra security.



## OPTIONAL MICROPROCESSOR

The optional microprocessor is a controller that monitors

all cabinet safety parameters including airflow, containment, and filter condition.



## OPTIONAL WHEELS

Units come standard with leveling feet. For situations that require mobility, optional lockable castors are available.



## START UP KIT OPTION

The start up kit provides you with everything you need to safely operate and maintain your forensic evidence drying cabinet.

The start up kit includes hangers, sponges, protective goggles, latex gloves, disinfectant spray, respirator, paper lining for collecting trace, tamper proof seals, set of pre-filters, and biohazard safety labels for waste.



PART OF AIR SCIENCE USA's COMMITMENT TO  
PROTECTING PEOPLE AND THE ENVIRONMENT.

Air Science USA has always been at the forefront of contamination, chemical hazards and pollution control. We are leaders in High Efficiency Particulate Air (HEPA) filters and Activated Carbon Filtration for the containment of hazardous substances thus protecting both the environment and the operator. Utilizing advanced filtration techniques, Air Science USA's products not only achieve but generally surpass legal requirements.

<i>SPECIFICATIONS</i>	<i>3ft</i>	<i>4ft</i>	<i>5ft</i>	<i>6ft</i>	<i>Benchtop</i>	<b>4, 5, 6ft Duplex units also</b>
Dimensions (w x d x h)	36 x 28 x 86	48 x 28 x 86	60 x 28 x 86	72 x 28 x 86	30 x 28 x 48	

*ALL UNITS*

Air Changes per hour >150

*CONSTRUCTION*

Main Structure White polypropylene

Doors Lexan, key locked for security with fittings for tamper proof seal

Plumbing PVC water supply and flexible spray hoze

Fan Centrifugal for high velocity low noise, sparkless and brushless

Drain Central 1.5" waste outlet

Storage Hanging rail and removable shelves

Alarms Low air flow alarm, optional filter saturation alarm

*ELECTRICAL*

Supply 110v 60Hz single phase (other voltages available on request)

*FILTERS*

Filter Door Pre-filter

Filter-Main Pre-filter, HEPA filter, and carbon filter

Filter Exhaust Optional HEPA (complies with ANSI Z9.5 when fitted)

*OPTIONAL*

Internal Lights / Safety Exhaust Filter / Electronic Filter Saturation Alarm

Water Pump / Wheels / Start-up Kit

For advice on filter selection call Air Science USA  
800.306.0656 or [info@air-science.com](mailto:info@air-science.com)

Distributed by:

